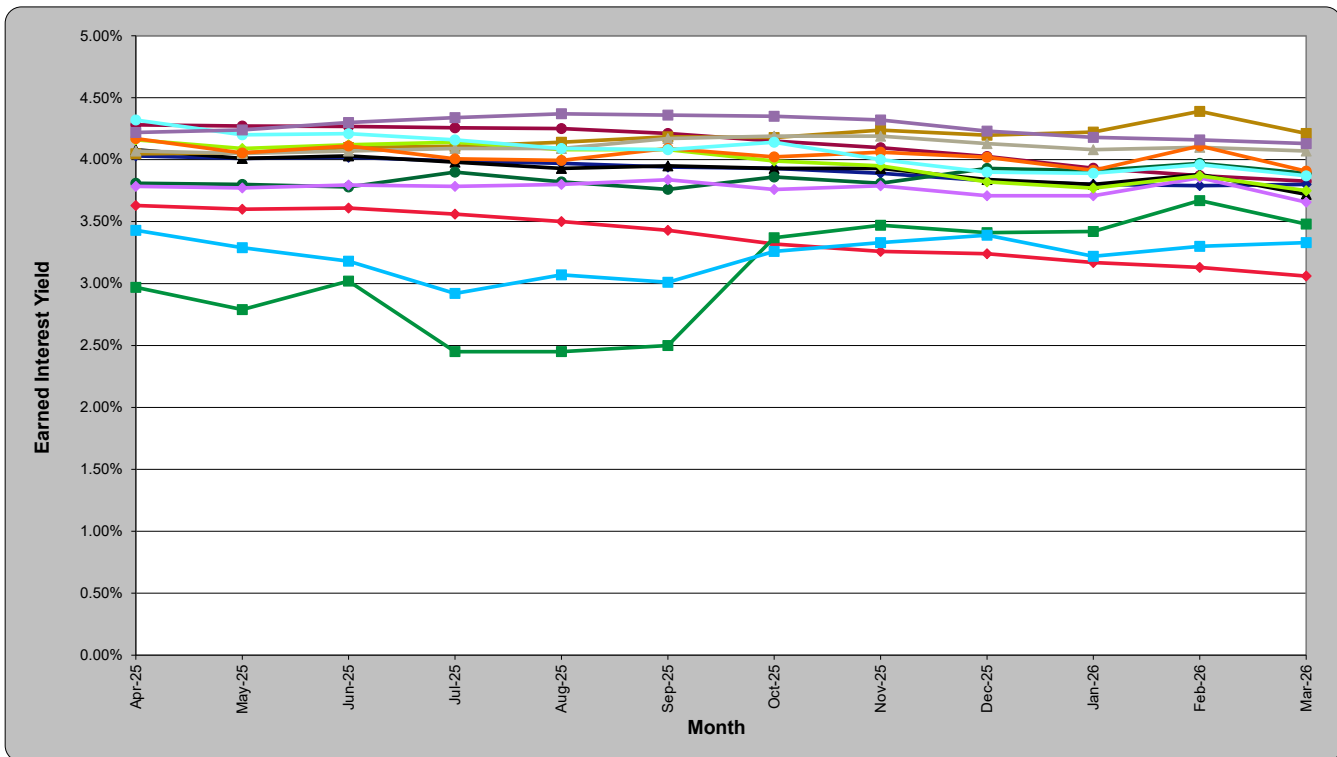


**COMPARISON OF VARIOUS COUNTY POOLED INVESTMENT FUNDS AND LAIF
12-MONTH YIELD PERFORMANCE AS OF MARCH 2026**

Jurisdiction	Apr-25	May-25	Jun-25	Jul-25	Aug-25	Sep-25	Oct-25	Nov-25	Dec-25	Jan-26	Feb-26	Mar-26
◆ Contra Costa	4.16%	4.09%	4.12%	4.14%	4.08%	4.08%	3.99%	3.95%	3.82%	3.77%	3.87%	3.75%
■ Fresno	2.97%	2.79%	3.02%	2.45%	2.45%	2.50%	3.37%	3.47%	3.41%	3.42%	3.67%	3.48%
● LAIF	4.28%	4.27%	4.27%	4.26%	4.25%	4.21%	4.15%	4.10%	4.03%	3.93%	3.87%	3.83%
◆ Los Angeles	3.63%	3.60%	3.61%	3.56%	3.50%	3.43%	3.32%	3.26%	3.24%	3.17%	3.13%	3.06%
■ Nevada	3.43%	3.29%	3.18%	2.92%	3.07%	3.01%	3.26%	3.33%	3.39%	3.22%	3.30%	3.33%
● Orange	4.17%	4.05%	4.11%	4.01%	3.99%	4.09%	4.02%	4.06%	4.02%	3.91%	4.11%	3.91%
◆ Riverside	4.03%	4.01%	4.02%	3.99%	3.97%	3.94%	3.93%	3.89%	3.83%	3.80%	3.79%	3.80%
▲ Sacramento	4.08%	4.01%	4.03%	3.98%	3.93%	3.95%	3.93%	3.93%	3.84%	3.80%	3.88%	3.72%
■ San Bernardino	4.22%	4.24%	4.30%	4.34%	4.37%	4.36%	4.35%	4.32%	4.23%	4.18%	4.16%	4.13%
● San Diego	3.81%	3.80%	3.78%	3.90%	3.82%	3.76%	3.86%	3.81%	3.93%	3.91%	3.97%	3.89%
◆ San Francisco	3.79%	3.77%	3.80%	3.79%	3.80%	3.84%	3.76%	3.79%	3.71%	3.71%	3.85%	3.66%
▲ San Luis Obispo	4.07%	4.05%	4.07%	4.09%	4.09%	4.17%	4.19%	4.19%	4.13%	4.08%	4.10%	4.07%
● Solano	4.32%	4.20%	4.21%	4.16%	4.09%	4.08%	4.14%	4.00%	3.90%	3.89%	3.96%	3.87%
■ Sonoma	4.05%	4.06%	4.10%	4.11%	4.14%	4.19%	4.18%	4.24%	4.20%	4.22%	4.39%	4.21%



NOTE:
This graph is for illustration purposes only. When comparing performance returns, it is important to consider the cash flow needs of the individual pool fund participants in relation to the objectives of each county's investment policy.