



**Department of Finance**  
**BEN LAMERA, DIRECTOR OF FINANCE**  
**POOLED INVESTMENT FUND**

**Monthly Review — August 2021**

**PORTFOLIO COMPLIANCE**

Based on the Director of Finance Review Group Month-End Report, the entire portfolio was in **full compliance** with the Sacramento County Annual Investment Policy for the Pooled Investment Fund for Calendar Year 2021 and California Government Code.<sup>1</sup>

**PORTFOLIO STATISTICS**

Portfolio's Month-End Balance	\$4,115,458,239
<b>Earned Income Yield for the Month</b>	<b>0.687%</b>
Weighted Average Maturity (Days)	337
Estimated Duration (Years)	0.905
Amortized Book Value	\$4,114,717,614
Month-End Market Value	\$4,143,740,507
Percent of Market to Book Value <sup>2</sup>	100.71%

**Investment Objectives**

- **Safety of Principal**
- **Liquidity**
- **Public Trust**
- **Maximum Rate of Return**

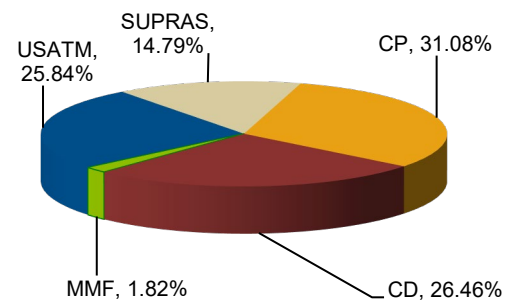
External third party Investment Manager(s) at month end:

State Treasurer's Office (LAIF)	\$75,000,000
---------------------------------	--------------

**PORTFOLIO STRUCTURE<sup>3</sup>**

Investment Description	Portfolio at Cost	Yield at Month End
<b>US Agency, Treasury &amp; Municipal Notes (USATM):</b>		
US Agency Notes	25.41%	1.218%
US Treasury Notes	0.00%	0.000%
Municipal Notes	0.43%	0.640%
<b>Total USATM</b>	<b>25.84%</b>	<b>1.208%</b>
<b>Supranationals (SUPRAS)</b>	<b>14.79%</b>	<b>1.907%</b>
<b>Commercial Paper (CP)</b>	<b>31.08%</b>	<b>0.110%</b>
<b>Certificates of Deposit (CD)</b>	<b>26.46%</b>	<b>0.114%</b>
<b>LAIF/Money Market Funds (MMF)</b>	<b>1.82%</b>	<b>0.221%</b>
<b>Repurchase Agreements (REPO)</b>	<b>0.00%</b>	<b>0.000%</b>

**Percentage Portfolio Structure by Asset Class<sup>3</sup>**



**US Agency Notes Breakdown Percent of Portfolio at Cost<sup>3</sup>**

FFCB Notes/Discount Notes	5.03%
FHLB Notes/Discount Notes	13.39%
FNMA Notes/Discount Notes	5.30%
FHLMC Notes/Discount Notes	1.69%
<b>Total US Agency Notes</b>	<b>25.41%</b>

<sup>1</sup> This monthly review complies with all of the elements required by California Government Code §53646(b), with the exception of a detailed listing of each investment. A complete copy of the *Quarterly Pooled Investment Fund Report*, including a detailed listing of each investment, is available on the Department of Finance, Investment Division Web page at <https://finance.saccounty.net/Investments/Pages/RptQuartly.aspx>.

<sup>2</sup> Percent of market to book value is calculated using amortized book value. The GASB 31 fair value reported in the County's Annual Financial Report is calculated using the book value at purchase.

<sup>3</sup> Percentages may not add up to totals due to rounding

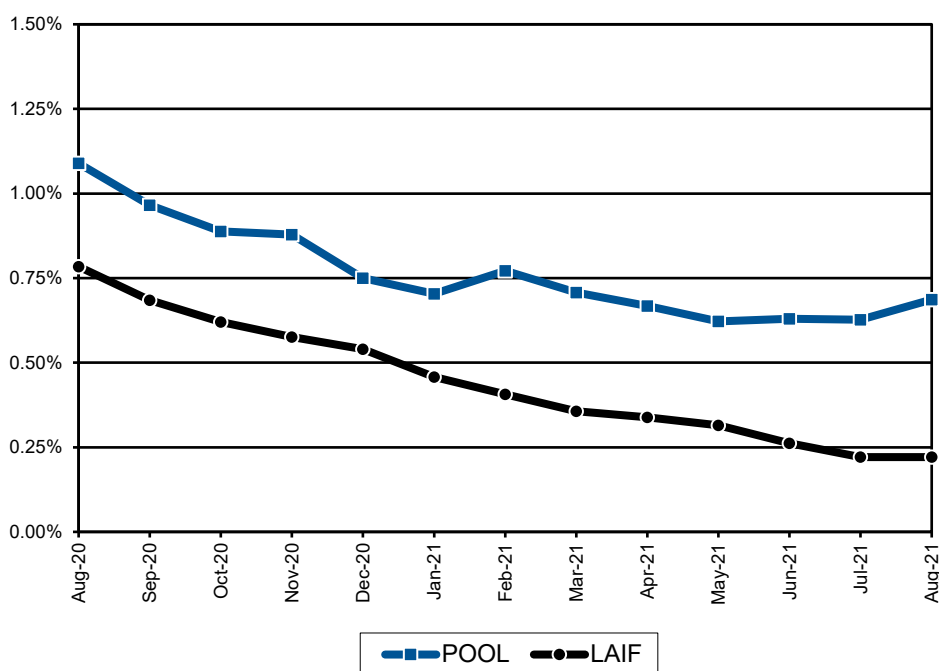
## YIELD HISTORY

The earned income yield history represents gross yields; **costs have not been deducted**. The investment management costs in prior years and this year continue to be approximately 8 basis points or 0.08%. The quarterly apportionment of earnings to participating funds will be made on a **cash basis** (as opposed to an accrual basis) for the first three quarters of the fiscal year. Earnings to participating funds will be annualized over the fiscal year based on a fund's cumulative average daily cash balance at each quarter end and fiscal year end. At fiscal year end (fourth quarter), the earnings of the pool will be converted to an accrual basis for the fourth quarter earnings' allocation.

## YIELD TRENDS<sup>4</sup>

### Earned Income Yield Over Last 12 Months

Earned Income Yield History		
MONTH	POOL	LAIF
Aug-20	1.09%	0.78%
Sep-20	0.97%	0.69%
Oct-20	0.89%	0.62%
Nov-20	0.88%	0.58%
Dec-20	0.75%	0.54%
Jan-21	0.70%	0.46%
Feb-21	0.77%	0.41%
Mar-21	0.71%	0.36%
Apr-21	0.67%	0.34%
May-21	0.62%	0.32%
Jun-21	0.63%	0.26%
Jul-21	0.63%	0.22%
Aug-21	0.69%	0.22%



## CASH FLOW PROJECTION

The Pooled Investment Fund cash requirements are based on a 14-month historical cash flow model. The model has been adjusted for expected non-reoccurring participant liquidity needs. This projection, updated on September 13, 2021, is sufficient to meet cash flow expenditures for the next six months.

Month	Beginning Bank Balance	Receipts & Maturities	Disbursements	Difference	Less Investments Beyond 1 year	Funds Available to Invest for Future Cash Flow Needs <sup>5</sup>
<i>Dollar amounts represented in millions</i>						
Sep	20.0	\$1,373.2	\$819.3	\$553.9	\$25.0	\$528.9
Oct	20.0	\$1,304.5	\$754.9	\$549.6	\$25.0	\$524.6
Nov	20.0	\$1,314.5	\$920.8	\$393.7	\$25.0	\$368.7
Dec	20.0	\$1,742.9	\$809.6	\$933.3	\$25.0	\$908.3
Jan	20.0	\$1,579.1	\$1,116.2	\$462.9	\$25.0	\$437.9
Feb	20.0	\$706.8	\$726.4	(\$19.6)	\$25.0	(\$44.6)

If you have any questions about the Pooled Investment Fund, please call Chief Investment Officer Bernard Santo Domingo at (916) 874-7320 or Investment Officer Dave Matuskey at (916) 874-4251.

<sup>4</sup> The earned income yield is the total net earnings divided by the average daily portfolio balance multiplied by 365 and then divided by the actual number of days in the month. The reported yield fluctuates based upon the number of days in the month, thus resulting in the anomaly of higher yields being reported for months with fewer days. February's yield is a prime example of such an anomaly.

<sup>5</sup> Any excess net cash flow amounts in this column will be used to fund the negative cash flow positions in later months.